

TAMPER PROOF FREEZE INDICATOR



LogTag[®]

TICT iSO Tag[®]
Tamper-Proof Freeze Indicator



The LogTag® iS0°Tag® is a tamper-proof, irreversible electronic indicator which shows if the temperature has been at or below freezing point (0°C or 32°F) for 60 minutes.

The iS0°Tag® is factory configured with a low temperature limit of -0.5°C for a duration of 60 minutes. Designed to meet WHO PQS performance specification E06/IN03.1 for irreversible freeze indicators.

Features



Records temperature from -25°C to +60°C.



Clear indication of alarm status at all times.



Meets WHO PQS performance specification E06/IN03.1.



Push button Start and Stop.

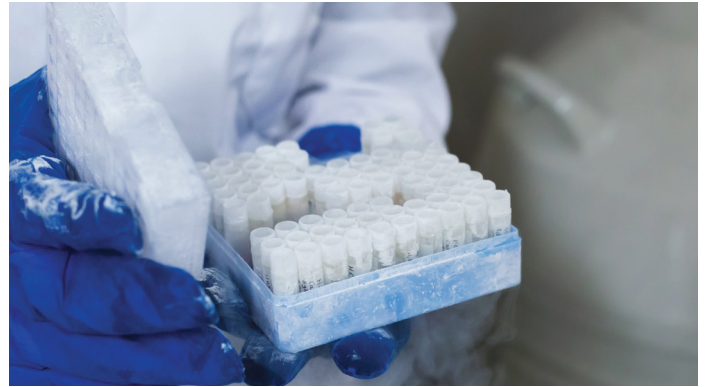


Monitors temperature and records daily statistics for up to 3 years.

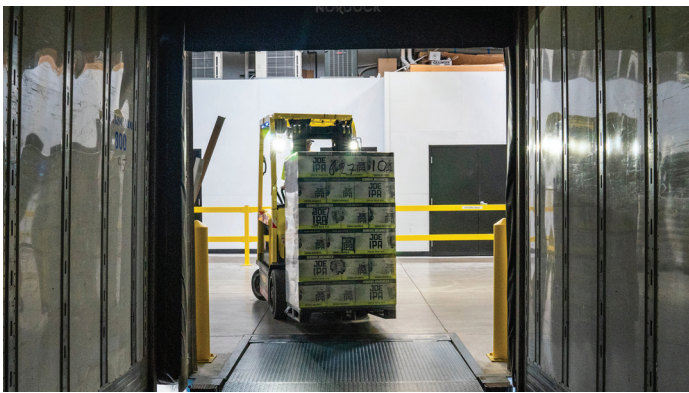
Applications



Pharmaceutical Transport



Vaccine Transport



Food Transport



Blood & Organ Transport

Specifications

Product Model	TICT iS0*Tag
Sensor Measurement Range	-25°C to +60°C (-13°F to +140°F).
Operating Temperature Range	-25°C to +60°C (-13°F to +140°F).
Storage Temperature Range	0°C to +60°C (32°F to +140°F).
Rated Temperature Reading Accuracy	Better than ±0.5°C for -10°C to +25°C. Better than ±1.0°C for -25°C to -10°C. Better than ±1.0°C for +25°C to +60°C. <i>Actual performance is typically much better than the rated values. Accuracy figures can be improved by recalibration.</i>
Rated Temperature Reading Resolution	0.1°C for -25°C to +60°C. <i>LogTag Analyzer[®] currently displays to one decimal place of °C or °F. The native resolution is what is stored in the LogTag[®].</i>
Sensor Reaction Time	Typically less than 7 minutes (T90) in moving air (1m/s).
Recording Capacity	Minimum & Maximum temperature for each of the 1096 days. Duration of excursion beyond alarm limits for each day. Up to 270 recorded real time temperature values each before and after the alarm has triggered.
Sampling Interval	Factory set from 5 to 15 minutes, typically set to 5 minutes.
Logging Modes	1096 day statistics with temperature/time excursions and a mark entry. 540 real time readings.
Logging Start Options	Push button start. Factory configuration, typically set to 60 minutes.
Recording Indication	One low and one high alarm, indicated on the display.
Environmental	IP64.
Power Source	CR2032 3V LiMnO ₂ Battery (Fixed).
Battery Life	Minimum storage life of 12 Months before 'start'. Monitoring period: 1096 days (includes storage time).
Real Time Clock	Built-in real time clock. Rated accuracy ±25ppm @ 25°C (equivalent to 2.5 seconds/day). Rated temperature coefficient is -0.034 ±0.006ppm/°C (I.e typically +/- 0.00294 seconds/day/°C).
Size	71.5mm(W) x 33.0mm(H) x 8.6mm(T).
Weight	19g.
Case Material	Polycarbonate.

